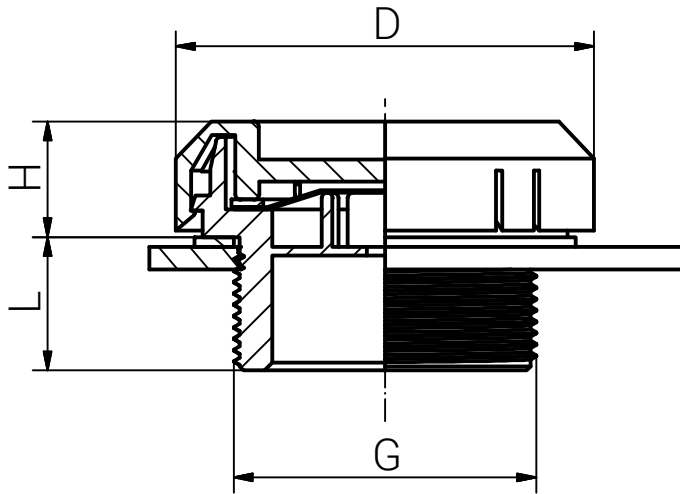
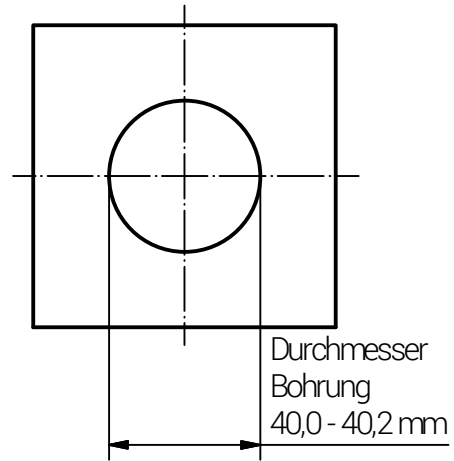
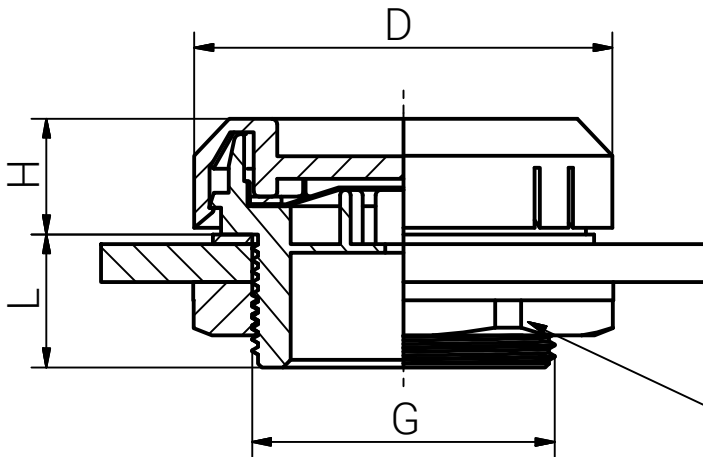


Montageanleitung

Gewindebohrung
mit Flachdichtung



Durchgangsbohrung
mit Flachdichtung



Gegenmutter

Schritt	Montageschritt
1	Druckausgleichselement mit dem Anschlussgewinde am Gegenstück (z.B. Elektronikgehäuse) montieren und so weit anziehen, dass die Flachdichtung ihre Funktion erfüllt. Zu festes Anziehen kann zu Beschädigungen führen.

Das Druckausgleichselement sollte seitlich montiert werden.

Artikel		Membrantyp	Gewinde	D	L	H	Anzugsdrehmoment (Nm) ADM
RAL7035	RAL9005		G	(mm)	(mm)	(mm)	Toleranz ±0,5
11087540	13087540	H	M40x1,5	55,3	18,0	15,5	5,0



RST Rabe-System-Technik und Vertriebs-GmbH
Otto-Lilienthal-Strasse 19
49134 Wallenhorst
☎ +49 5407 8766-0
☎ +49 5407 8766-99
✉ info@rst.eu

Unless otherwise specified on the drawing:
Metric Thread = EN 60423
PG Thread = DIN 40430
NPT Thread = ANSI B1.20.1
Tolerance: DIN ISO 2768-m
All dimensions in mm

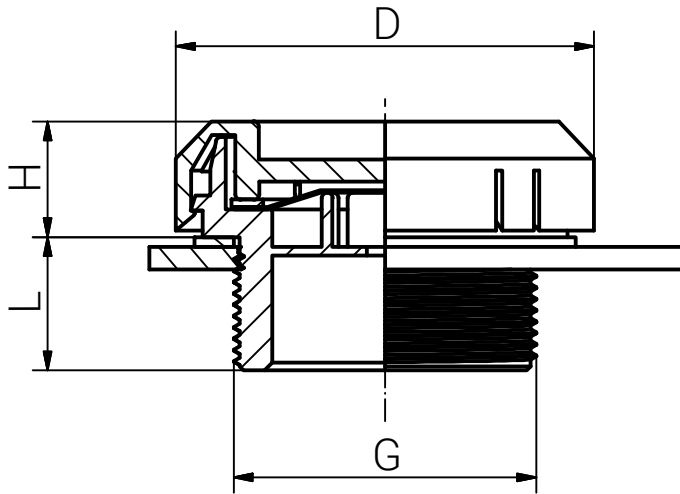
Abusive use, in particular reproduction and dissemination to third parties is not permitted. You can be punished by civil law. Technical changes are reserved.

		Date	Name
	Draw.	12.05.2020	SL
	Appr.	12.05.2020	KH
	Norm		1:1/1:2
	Scale:		
	Material:	Polycarbonat	
A	Text	10.11.2020	SL
Status	Modification	Date	Name

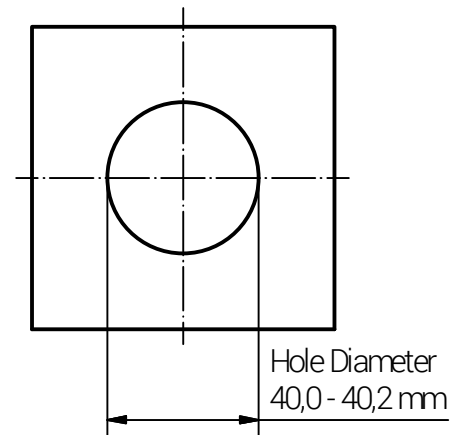
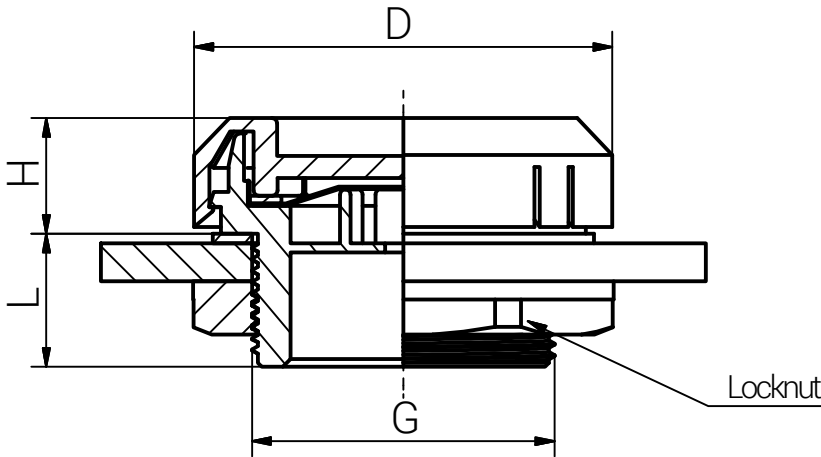
<p>Druckausgleichselement Kunststoff M40x1,5</p>		Drawing-Nr.: 1x087540_SZM_TD_German	
		1	of 1
		A4	
		V22	

Mounting Instruction

Threaded Enclosure Flat Washer Application



Non Threaded Enclosure Flat Washer Application



Step	Assembly Steps
1	Mount the pressure balance element with the connection thread on the counterpart (e.g. electronic enclosure) and tighten until the washer fulfills its function. Over tightening may cause damage.

The pressure equalization element should be mounted laterally.

Article		Type of membrane	Thread	D	L	H	Tighting Torque (Nm) TT
RAL7035	RAL9005		G	(mm)	(mm)	(mm)	Tolerances ±0,5
11087540	13087540	H	M40x1,5	55,3	18,0	15,5	5,0



RST Rabe-System-Technik und Vertriebs-GmbH
 Otto-Lilienthal-Strasse 19
 49134 Wallenhorst
 ☎ +49 5407 8766-0
 ☎ +49 5407 8766-99
 ✉ info@rst.eu

Unless otherwise specified on the drawing:
 Metric Thread = EN 60423
 PG Thread = DIN 40430
 NPT Thread = ANSI B1.20.1
 Tolerance: DIN ISO 2768-m
 All dimensions in mm

Abusively use, in particular reproduction and dissemination to third parties is not permitted. You can be punished by civil law. Technical changes are reserved.

		Date	Name
	Draw.	12.05.2020	SL
	Appr.	12.05.2020	KH
	Norm		1:1/1:2
	Scale:		
	Material:	Polycarbonate	
A	Text	10.11.2020	SL
Status	Modification	Date	Name

Pressure Balance Elements Plastic M40x1,5		Drawing-Nr.: 1x087540_SZM_TD_Englisch	
		1	of 1
		A4	
		V10	